

Total lift solution - Matched drives and motors

NEW



EMERSONTM
Industrial Automation



- Simple Selection
- Quick set-up
- Easy optimisation
- Class leading performance



Gearless lift solutions from Emerson

Emerson Industrial Automation presents their new matched motor and drive solution developed specifically for gearless lift applications. The matched combinations are easy to select, install and set-up, whilst offering market leading ride comfort.

This solution can reduce drive commissioning time and totally eliminates the need for manual performance optimisation through intelligent integration between the drive and motor. This is achieved by combining leading technology from Control Techniques and Leroy Somer, two divisions of Emerson Industrial Automation.

For more information visit www.controltechniques.com



Simple selection - guaranteed performance

Cabin Load (kg)	Speed (m/s)	Drive	Motor	Sheave diameter (mm)	
630	1	SP2401	XAP2M	240	
	1.6	SP2402			
1000	1	SP2402	XAP2L/XAF2		
	1.6	SP2404			
1250	1	SP2403	XAF3		320
	1.6	SP3402			
1600	1	SP2403	XAF4		
	1.6	SP3403			
2000	1	SP2404	XAF4		
	1.6	SP4401			
2500	1	SP3402	XAF6	400	
	1.6	SP4402			

Roping 2:1, Duty 40% ED, 180 starts per hour

Control Techniques and Leroy Somer have many years of experience designing drive systems for elevators, and the result is the Unidrive SP and XA range of motors. Designed and rated to give optimum elevator performance, regardless of system duty or installation preference.

The ultra high speed smooth control gives a high quality, low noise, jerk free ride.



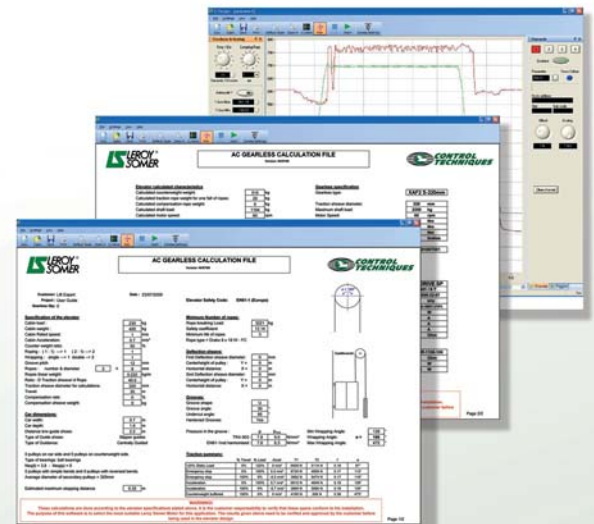
Key features

- Class leading ride comfort and performance
- Common software selection tool for motor and drive package
- Supply voltages: 200 - 690V
- EMC conformance to EN12015/16
- Efficient gearless and optional regenerative operation (VDI 4707 Class A)
- High resolution robust digital encoder: Endat, Hiperface, SSI
 - High end profile generator
 - Creep-to-floor positioning
 - Direct-to-floor positioning
 - Distance calculation
 - Simple integration with all lift controllers
 - Parallel terminal interface
 - DCP communications (DCP3 and DCP4)
 - CANopen lift interface CiA417
 - CANopen lift interface CiA417 over Ethernet

• Contactorless operation

In accordance with EN81-1/2

- Reduced acoustic noise
- Reduced EMC emissions
- Reduced space
- Reduced cost



Simple software selection tools



Part No. 0771-0015-01

